



BENCH GRINDER Ø150MM 450W/230V HEAVY-DUTY

MODEL NO: **BG150XD/99.V3**

Thank you for purchasing a Sealey product. Manufactured to a high standard, this product will, if used according to these instructions, and properly maintained, give you years of trouble free performance.

IMPORTANT: PLEASE READ THESE INSTRUCTIONS CAREFULLY. NOTE THE SAFE OPERATIONAL REQUIREMENTS, WARNINGS & CAUTIONS. USE THE PRODUCT CORRECTLY AND WITH CARE FOR THE PURPOSE FOR WHICH IT IS INTENDED. FAILURE TO DO SO MAY CAUSE DAMAGE AND/OR PERSONAL INJURY AND WILL INVALIDATE THE WARRANTY. KEEP THESE INSTRUCTIONS SAFE FOR FUTURE USE.



Refer to instructions



Wear eye protection



Wear a mask

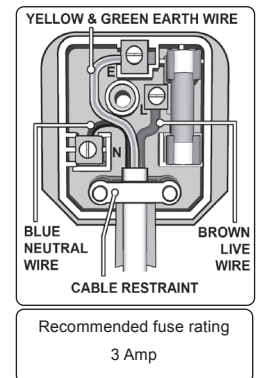


Wear ear protection

1. SAFETY

1.1. Electrical Safety

- WARNING!** It is the user's responsibility to check the following:
Check all electrical equipment and appliances to ensure that they are safe before using. Inspect power supply leads, plugs and all electrical connections for wear and damage. Sealey recommend that an RCD (Residual Current Device) is used with all electrical products. You may obtain an RCD by contacting your local Sealey dealer.
If used in the course of business duties, it must be maintained in a safe condition and routinely PAT (Portable Appliance Test) tested. Electrical safety information, it is important that the following information is read and understood.
- ✓ Ensure that the insulation on all cables and on the appliance is safe before connecting it to the power supply.
- ✓ regularly inspect power supply cables and plugs for wear or damage and check all connections to ensure that they are secure.
- ✓ Ensure that the voltage rating on the appliance suits the power supply to be used and that the plug is fitted with the correct fuse - see fuse rating in these instructions.
- ✗ **DO NOT** pull or carry the appliance by the power cable.
- ✗ **DO NOT** pull the plug from the socket by the cable.
- ✗ **DO NOT** use worn or damaged cables, plugs or connectors. Ensure that any faulty item is repaired or replaced immediately by a qualified electrician.
- ✓ This product is fitted with a BS1363/A 13 Amp 3 pin plug.
If the cable or plug is damaged during use, switch the electricity supply and remove from use.
Ensure that repairs are carried out by a qualified electrician.
Replace a damaged plug with a BS1363/A 13 Amp 3 pin plug. If in doubt contact a qualified electrician.
 - a) Connect the GREEN/YELLOW earth wire to the earth terminal 'E'.
 - b) Connect the BROWN live wire to the live terminal 'L'.
 - c) Connect the BLUE neutral wire to the neutral terminal 'N'.Ensure that the cable outer sheath extends inside the cable restraint and that the restraint is tight.
Sealey recommend that repairs are carried out by a qualified electrician.



1.2. General Safety

- WARNING!** Disconnect the grinder from the mains power, and ensure the grinding wheels are at a standstill before attempting to change accessories, service or perform any maintenance.
Note: With the exception of "Abrasive Wheels Regulations" safety instructions will also apply to use of a wire brush on appropriate models.
- ✓ Maintain the grinder in good condition and check moving parts alignment regularly.
- ✓ Replace or repair damaged parts. Use recommended parts only. Non authorised parts may be dangerous and will invalidate the warranty.
- ▲ **DANGER! DO NOT** use a damaged stone as it is dangerous and may cause damage or serious personal injury.
- WARNING!** Only persons qualified under the "Abrasive Wheels Regulations" and holding a current grinding wheel certificate are to change or dress grinding stones. Unplug grinder from mains power and refer to chapter 4 "Grinding Stones" for details.
- WARNING!** Keep all guards and holding screws in place, tight and in good working order. Check regularly for damaged parts.
A guard or any other part that is damaged should be repaired or replaced before tool is used. The safety guard is a mandatory fitting where grinder is used in premises covered by the Health & Safety at Work Act.
- ✓ Locate grinder in an adequate working area for its function, keep area clean, tidy and free from unrelated materials. Ensure adequate lighting.
- ✓ Before each use check grinding wheel for condition. If worn or damaged replace immediately.
- WARNING!** Always wear approved eye or face protection when operating the grinder.
- ✓ Use breathing protection in accordance with COSHH regulations if fumes or dust pose a hazard. Wear ear defenders and gloves if necessary.
- ✓ Keep hands and body clear of the work piece when operating the grinder.
- ✓ Maintain correct balance and footing. Ensure the floor is not slippery and wear non slip shoes.
- ✓ Remove ill fitting clothing. Remove ties, watches, rings, and other loose jewellery, and contain and/ or tie back long hair.
- ✓ Keep children and unauthorised persons away from the working area.
- ✗ **DO NOT** force the grinder to achieve a task it was not designed to perform.
- ✗ **DO NOT** operate the grinder if any parts are damaged or missing as this may cause failure or possible personal injury.

- ❑ **WARNING! DO NOT** grind, or sand any materials containing asbestos.
- ✗ **DO NOT** switch the grinder on whilst the wheel is in contact with the work piece.
- ✗ **DO NOT** get the grinder wet or use in damp or wet locations or areas where there is condensation.
- ✗ **DO NOT** use grinder where there are flammable liquids, solids or gases such as paint solvents, including waste wiping or cleaning rags etc.
- ✗ **DO NOT** touch the work piece close to the ground surface as it will be very hot. Allow to cool. The work piece may also be very sharp.
- ✗ **DO NOT** operate the grinder when you are tired, under the influence of alcohol, drugs or intoxicating medication.
- ✗ **DO NOT** leave the grinder operating whilst unattended.
- ✓ When not in use switch the grinder off, and disconnect from the mains power supply, and clean the machine and working area.

2. INTRODUCTION

Fitted with copper wound induction motor drive. Suitable for general workshop grinding and sharpening use. Two aluminous oxide grinding stones, coarse and fine. Fitted with stone guards and spark arrestors. Eye shields included. Supplied with 3-pin plug.

3. SPECIFICATION

Model No..... BG150XD/99
 Supplied with..... 2 x Stones
 Motor Power.....450W
 Supply.....230V,50Hz
 Axle Diameter 13mm
 No Load Speed 2850rpm

4. ASSEMBLY

Unpack the product and check contents Should there be any damaged or missing parts contact your supplier immediately.

- ❑ **WARNING!** Before assembly check to ensure grinder is unplugged from mains.

4.1. Eyeshield.

- 4.1.1. Remove retaining screws (fig 1. A) from the eyeshield bracket.
- 4.1.2. Position the eyeshield bracket on the underside of the stone cover and align holes (fig 2)
- 4.1.3. Fix eyeshield to cover with screws (fig 2.1). If the shield is loose and drops down, tighten shield screws (fig 3.2)
- 4.1.4. Loosen screw (fig 3.1.) and adjust the arrestor so it is 2mm from the stone face (fig 4).
- 4.1.5. Securely tighten arrestor screw (fig 3.1).

4.2. Tool Rest.

Note: Some models may already have the tool rest assembled, but stone clearance must still be checked.

- 4.2.1. Take tool rest (fig 5) and align it with bolt slot on the inside of the grinding stone cover (X).
- 4.2.2. Pass bolt (A) through both slots and place washers (B) onto bolt.
- 4.2.3. Position the rest at a maximum of 2mm from the stone surface and secure the assembly by tightening knob (C).
- 4.2.4. Turn the grinding stones by hand to ensure clearance of above items.

4.3. Installation.

- 4.3.1. Securely bolt the grinder to a fireproof workbench using the base holes as a template. Check that all assembly nuts and bolts are secure then read section 5 (grinding stones) before use.

5. GRINDING STONES

- 5.1. **MANDATORY SAFETY INSTRUCTIONS.** (The following instructions must be observed together with chapter 1 safety).

- ▲ **DANGER!** use of a damaged stone is dangerous and may cause damage or personal injury.

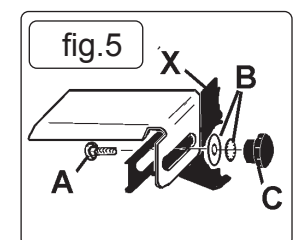
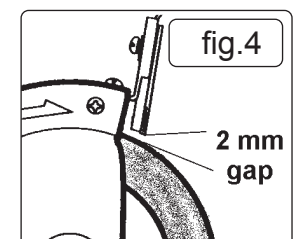
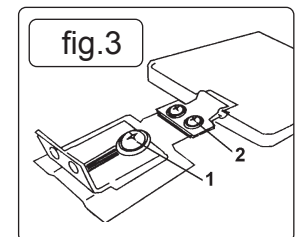
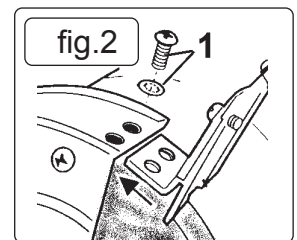
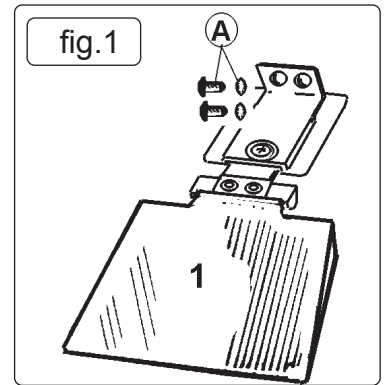
- ❑ **WARNING!** Ensure grinder is unplugged from the mains power supply before attempting to change grinding stones (or wheel).

- 5.1.1. Only persons qualified under the "Abrasive Wheels Regulations" and holding a current grinding wheel certificate are authorised to change and dress grinding stones (wheels).
- 5.1.2. Grinding stones (wheels) used with machine must be of an adequate speed rating and suitable for the material to be ground.
- 5.1.3. Ensure the cutting stone's maximum speed specification is higher than that indicated on the machine data plate.
- 5.1.4. Check grinding stones are secure, and the stone is not worn or damaged, that there are no fissures or cracks. if damaged replace immediately.
- 5.1.5. Ensure replacement stone is not damaged in any way such as cracks, deformations or splinters etc.
- 5.1.6. Also check the mounting flanges to ensure they are not deformed, burred or chipped. Damaged items must NOT be used as they may cause irregular pressure on the stone which may cause stone to break.
- ✗ **DO NOT** over tighten a stone. Never tamper with a stone in order to adapt it to a different size holder.
- 5.1.7. Install a new stone as in 5.2. Once mounted on the grinder test the stone before use by facing the grinder in a safe direction (point away from yourself, others and vulnerable items) and run for a short time. Dress the stone if necessary.

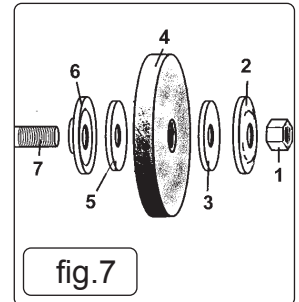
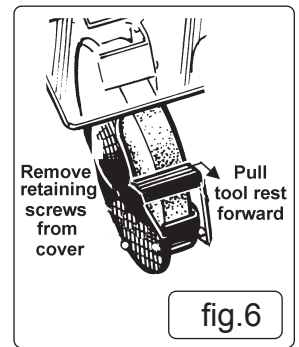
5.2. Stone Changing Procedure.

- ❑ **WARNING!** unplug grinder from the mains power supply before changing stone.

- 5.2.1. Raise the eye shield up, and away from the stone.
- 5.2.2. Loosen and pull the tool rest out as far as possible, but, **DO NOT** remove it (fig 6).
- 5.2.3. Remove the screws from the side of the wheel cover and remove the cover (fig 6).



- 5.2.4. Hold grinding stone firmly. To protect your hands use cloth or wear gloves. Unscrew retaining nut (fig.7.1)
 Note: The nut on the right side of the grinder has standard right hand thread (undo anti-clockwise). The left side nut has a left hand thread and must be loosened by turning clockwise. It may be necessary to strike the wrench sharply in the loosening direction with the heel of your hand to loosen the nut.
- 5.2.5. Remove grinding stone washer (fig 7.2), blotter (3), stone (4), 2nd blotter (5), washer (6) from main spindle (7).
- 5.2.6. Carefully inspect the new stone before installing to ensure there are no fissures, chips, or cracks.
 WARNING! DO NOT USE A DAMAGED STONE.
- 5.2.7. Inspect the blotters, if they are damaged replace them. The grinder must never be used without stone blotters, should you not have any available when you need to replace them, cut out a piece of suitable cardboard the same shape for temporary use only.
- 5.2.8. Install the new stone by reversing steps above. Ensure washers (2 & 6) are installed with the flange on the outside, (i.e. the concave side against the blotter).
- 5.2.9. Hold stone steady and secure locking nut. **DO NOT** over tighten as this may crack the stone.
- 5.2.10. Replace stone cover, re-adjust tool rest to a maximum of 2mm from stone face and tighten securely.
 Note: You do not require a certificate to change a wire wheel. Assembly is the same as with a stone.



6. OPERATION

- 6.1. **Pre use Inspection.**
 Note: Use the same clearance and alignment information if your model has a wire brush.
 WARNING! INSPECT THE GRINDER BEFORE OPERATING THE MACHINE. ENSURE THE GRINDER IS UNPLUGGED FROM THE MAINS POWER BEFORE COMMENCING THE INSPECTION.
- 6.1.1. Check the tool rests are securely fixed and set at a maximum of 2mm from the grinding stone.
- 6.1.2. Check that eye shields are in good condition, are secure and that you can see through them clearly.
- 6.1.3. Turn the grinding stones by hand and check for any damage. Check they do not touch the tool rests and are correctly aligned.
 If any of the above checks fail, replace, repair, or adjust as necessary before starting the grinder.
- 6.2. **Stone Use.**
 Depending on the model, grinders are supplied with one or two aluminous oxide stones. Stones have two grades, fine are preferred for hard materials and a coarse stones for soft materials.
 When grinding, should surface of the stone become "loaded" (coated with particles of the material being ground) it is probably the wrong grade of stone for the job.
 Important reminder: Grinding stones MUST Only be assembled by a person holding a grinding wheel certificate. Section 5.
- 6.3. **Using the Grinder.**
 WARNING! Before commencing work, ensure you have read, understood, and apply the section 1. Safety Instructions Plug grinder into the mains power supply. Place the eye shield in its appropriate safety location.
 Switch the grinder on, and bring the work piece slowly into contact with the spinning stone, or wire wheel.
 When you have completed your task, unplug the grinder from the mains power supply, and clean the machine ready for next use.

7. MAINTAINANCE

- WARNING!** Ensure the grinder is unplugged from the mains power supply before performing any maintenance or service.
- 7.1. As the grinding stone wears, adjust the position of the tool rests. The rest must be at a maximum of 2mm from the stone surface.
- 7.2. Regularly remove the grinding stone covers and clean out any dust and dirt.
- 7.3. The machine motor and bearing are sealed units and require no regular maintenance. Should you require assistance, contact your local Sealey service agent.
- 7.4. For information relating to the handling and maintenance of grinding stones refer to section 5.



WEEE REGULATIONS

Dispose of this product at the end of its working life in compliance with the EU Directive on Waste Electrical and Electronic Equipment (WEEE). When the product is no longer required, it must be disposed of in an environmentally protective way. Contact your local solid waste authority for recycling information.



ENVIRONMENT PROTECTION

Recycle unwanted materials instead of disposing of them as waste. All tools, accessories and packaging should be sorted, taken to a recycling centre and disposed of in a manner which is compatible with the environment. When the product becomes completely unserviceable and requires disposal, drain any fluids (if applicable) into approved containers and dispose of the product and fluids according to local regulations.

Note: It is our policy to continually improve products and as such we reserve the right to alter data, specifications and component parts without prior notice.

Important: No Liability is accepted for incorrect use of this product.

Warranty: Guarantee is 12 months from purchase date, proof of which is required for any claim.

Sealey Group, Kempson Way, Suffolk Business Park, Bury St Edmunds, Suffolk. IP32 7AR



01284 757500



01284 703534



sales@sealey.co.uk



www.sealey.co.uk