

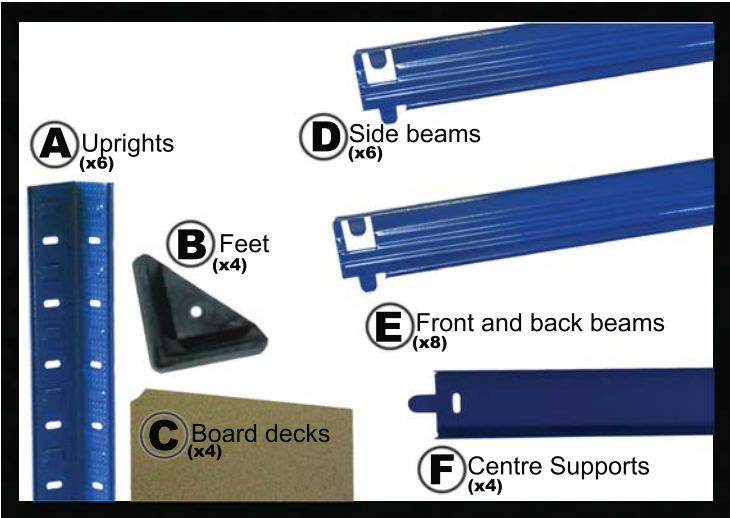
WSA & WSB WORKSTATIONS

ASSEMBLY INSTRUCTIONS

WSA & WSB

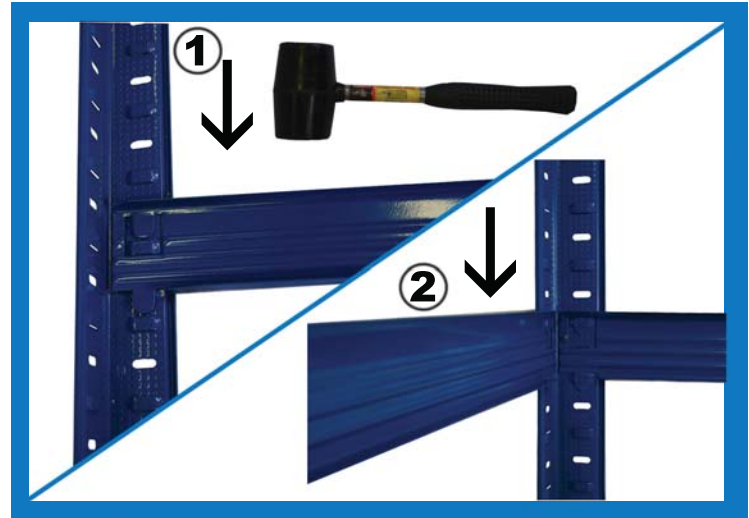
ADVISORY NOTES:

For ease of assembly, please read through all instructions before commencing. We recommend wearing protective gloves and goggles when assembling.



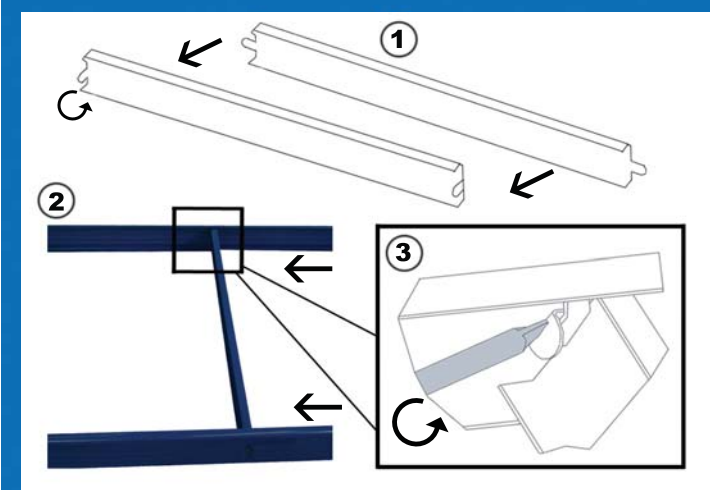
STEP 1

Check that all components are present.



STEP 2

Use rubber mallet to tap in beams. Start from bottom shelf and work upwards. Please ensure the taller posts are at the back of the workstation.



STEP 3

1. Bend tabs on centre support beam to 90 degrees. 2. Slide the support beam in place. 3. Use a screwdriver to bend tabs so the beam is secure.



STEP 4

Repeat step 2-4 for worktop and place the chipboards onto the beams.



STEP 5

Position short posts onto worktop and assemble rear shelves as in steps 2-4.



STEP 6

Place chipboards onto rear beams to complete the workstation.

LOAD CAPACITY

Work surface
& Lower Shelf:
300kg UDL*

Top Shelves:
100kg UDL*

*UDL = Uniformly
Distributed Load