

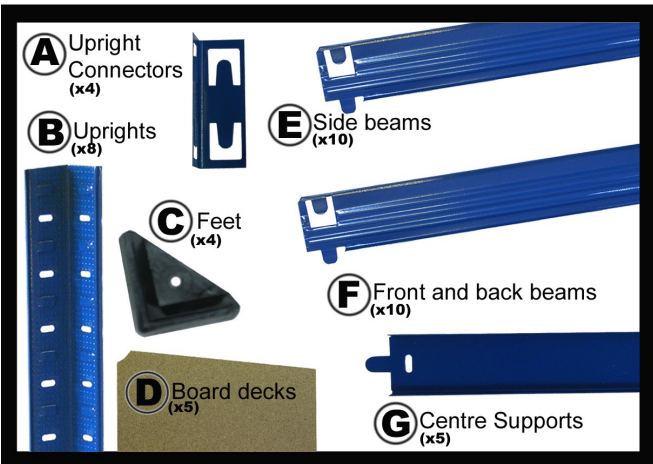
# 265KG INDUSTRIAL SHELVING

## ASSEMBLY INSTRUCTIONS

AS15

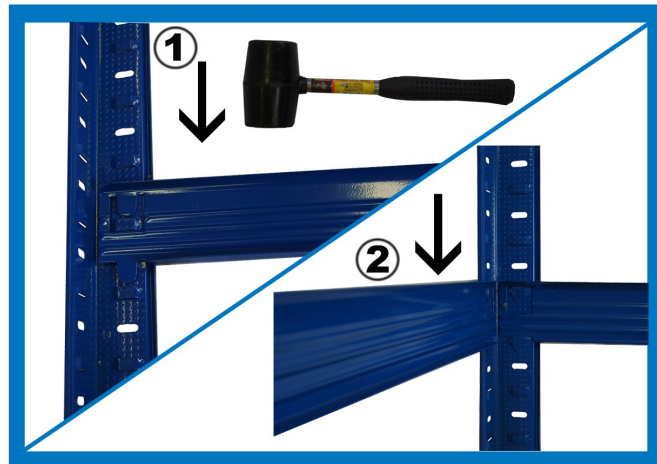
### ADVISORY NOTES:

For ease of assembly, please read through all instructions before commencing. We recommend wearing protective gloves and goggles when assembling. We recommend all bays assembled in runs are fixed together using our bay connectors (or can be bolted together).



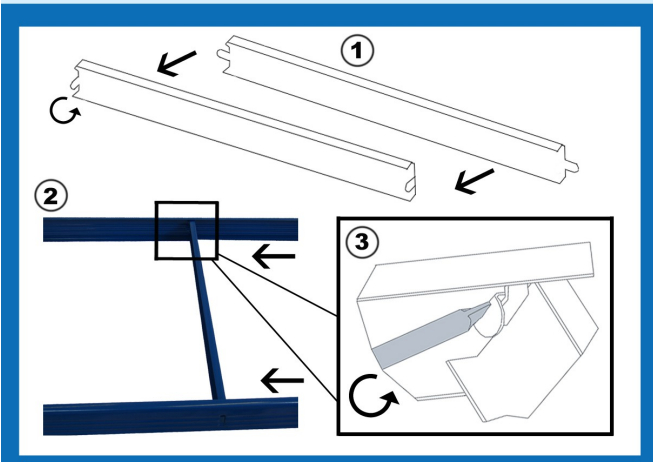
### STEP 1

Check that all components are present.



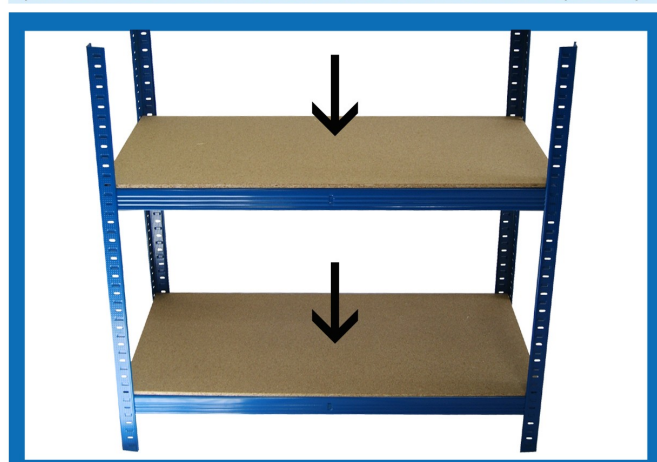
### STEP 2

Use rubber mallet to tap in beams. Start from bottom shelf and work upwards. Please ensure that bottom shelf is no more than 3 spaces up.



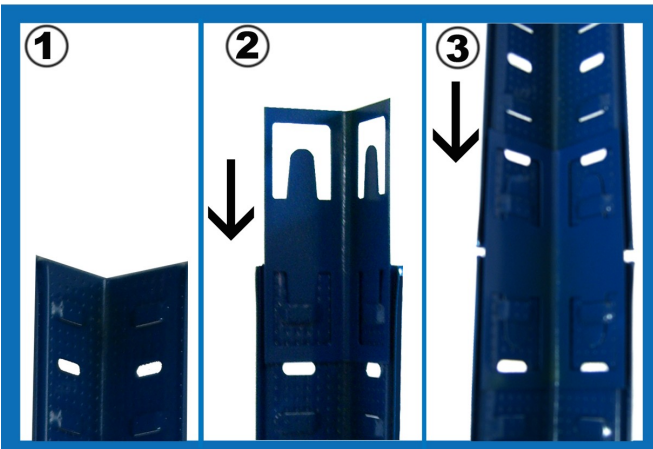
### STEP 3

**1.** Bend tabs on centre support beam to 90 degrees. **2.** Slide the support beam in place. **3.** Use a screwdriver to bend tabs so the beam is secure.



### STEP 4

Repeat step 2-4 for 2nd shelf and place the chipboards on the beams.



### STEP 5

Attach connectors to uprights, tapping down gently with mallet.



### STEP 6

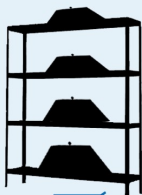
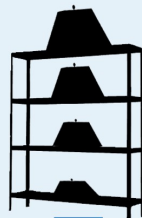
Repeat steps 2 - 4 to assemble all shelves.

# 265KG INDUSTRIAL SHELVING

## SAFETY LOADING CHART

LC11

Please fill in the following load chart using the '150 Range Capacities Table' and selecting the correct weight capacity for the size of shelving assembled. Attach sheet to shelving (ideally laminated, copies can be made).



**MAXIMUM BAY LOAD 1325Kgs**

265 Shelf Capacities UDL\*

Shelf Size	Max Load
900 x 300	265kg UDL
900 x 450	265kg UDL
900 x 600	265kg UDL
1200 x 450	265kg UDL
1200 x 600	265kg UDL

\* Uniformly distributed load  
Max bay load 1325Kg

### SAFETY PRECAUTIONS:

- All weight loadings relate to UDL (uniformly distributed load), the load capacity will be reduced if the shelf is loaded unevenly.
- Do not put on uneven ground.
- Put heavier items on the bottom, lighter items on higher shelves.
- Chipboard decks not suitable for damp environments.